



LONG BEACH CITY COLLEGE

Construction Update

Citizens' Oversight Committee

*Long Beach Community College District
October 31, 2017*

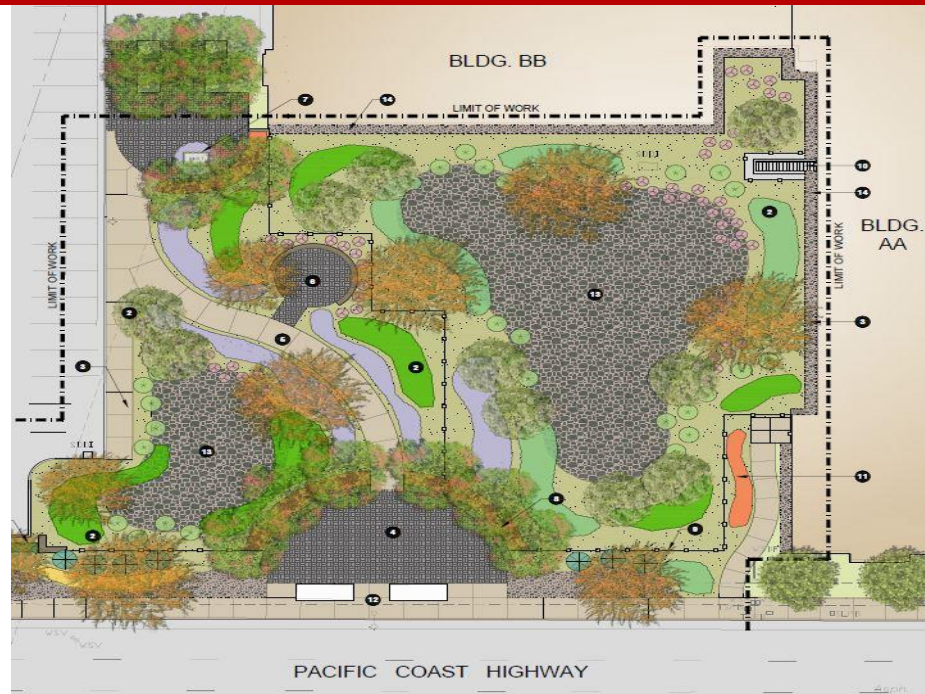


AGENDA

- ❑ **Scheduled Maintenance Projects**
- ❑ **District Wide Energy Projects**
- ❑ **Campus Improvement Projects**
- ❑ **Current Construction Projects**
 - ❖ LAC Building D - Science Labs
 - ❖ District Wide Security Monitoring System
 - ❖ LAC Building P - English Studies
- ❑ **Upcoming Construction Projects**
 - ❖ LAC Building J - Auditorium
- ❑ **Completed Construction Projects**
 - ❖ PCC Buildings QQ & RR – Electrical Program, Dyer Hall, Lifetime Learning Center
- ❑ **Current Design Projects**
 - ❖ LAC Kinesiology Labs and Aquatic Center
 - ❖ PCC Parking Structure – P2
 - ❖ LAC Building M – Multi-Disciplinary Classroom
 - ❖ PCC Building MM – Construction Phase I

Scheduled Maintenance Projects

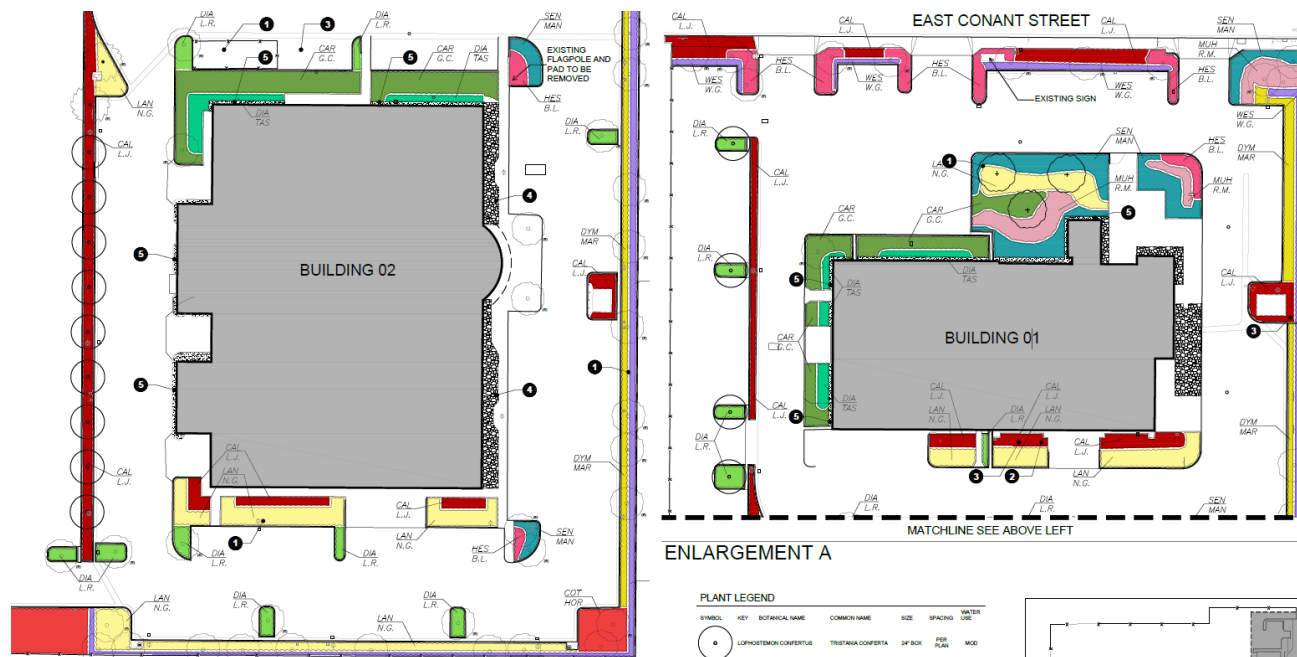
Fiscal Year 2015/16 \$3,089,434 (State Funds & Measure LB)



- Water conservation projects
 - Awarded design contract to HPI.
 - PCC Campus Water Conservation Project (*Submitted to DSA 2/3/17*)
 - ◆ Southwest of Campus, Bldg. HH and Bldg. II.
 - ◆ Job walk held 9/12. Bid opening 10/5. Targeting November Board meeting.
 - ◆ Anticipated start of Construction end of Fall 2017.

Scheduled Maintenance Projects

Fiscal Year 2015/16 \$3,089,434 (State Funds & Measure LB)



- Water conservation projects (continued)
 - LAC South Campus Water Conservation Project
 - ◆ Bldg. O1 and Bldg. O2 – Landscape and reclaimed water.
 - ◆ Bldg. Z – Reclaimed water only.
 - ◆ Currently in 50% CD Phase.
 - ◆ Targeting to go to bid end of Fall 2017.



Scheduled Maintenance Projects

Fiscal Year 2016/17 \$2,846,905 (State Funds and Measure LB)

- District-Wide Project for ADA Upgrades
 - PCC - Westberg and White (Design Consultant) preparing design documents to address deficiencies as identified in the CASp survey for the PCC campus.
 - ◆ Phase 1 Site Package - Submitted for DSA review.
 - ◆ Phase 2 Building Package - Currently in 95% CD phase.
 - LAC - DLR Group (Design Consultant) preparing design documents to address deficiencies as identified in the CASp survey for the LAC.

- Door Lockdown Project
 - Phase II – Finalizing work scope to allow for lockdown from within room.
 - ◆ PCC Campus - Retrofit doors in Buildings HH, GG, CC, JJ, II and MM.
 - ◆ LAC Campus - Retrofit doors in Buildings A, T, and CDC.



Scheduled Maintenance Projects

Fiscal Year 2017/18 \$639,456 (State Funds Only)

- Project Facilities Proposals (PFP) Submitted on September 13, 2017
- High Voltage Electrical Improvements
 - Replacement of oil switch and transformer at Bldg. G.
 - Replacement of oil switch at PCC main distribution.
- Lighting Inverter Replacement
 - Scope includes lighting inverter replacement at LAC Building T and PCC Building JJ.



District Wide Energy Projects

Prop 39 Years 3, 4, & 5 – 2015-18 Projects \$1,878,957

- LED Lighting Retrofits, Buildings T, HH and O2
 - Approximately 207,140 kWh/yr. in energy savings and \$30,263 in cost savings.
 - Notice to Proceed issued to LBCC, June 2017.
 - 10 weeks for equipment submittal and procurement.
 - Installation targeted for Fall 2017.
 - All work to take place during the 3rd shift.
 - Delayed due to Manufacturer filing chapter 7.
 - ◆ New manufacturer selected and going through approval process with contractor.



District Wide Energy Projects Integrated Energy Master Plan (IEMP)

- DLR Group was selected to create the Energy Master Plan.
- IEMP to include a clear path towards compliance with the Governor's Executive Orders.
 - District-Wide Net Zero Goal.
- IEMP will be integrated with the 2041 Facilities Master Plan & future designs.
 - Integrate IEMP to District Design Standards.
- Assessment and Planning Services
 - Central Plant/Building Analysis – load analysis.
 - Design recommendations
 - ◆ District-Wide net zero goal
 - ◆ On-site energy generation
 - ◆ Water Management
- Project started Summer 2017, estimated completion Spring 2018.
- Total project budget = \$211,944



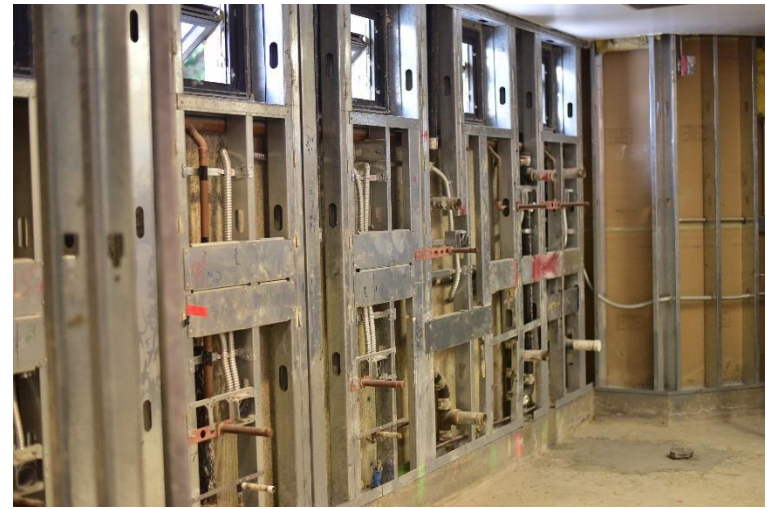
Campus Improvement Projects

Fiscal Year 2016/17 Campus Improvements (Measures E & LB)

- Facility Advisory Committee Approved 2/22/17
 - Building HH – Artificial Turf for courtyard (\$100,000) – Board approved in October – waiting for Notice to Proceed from Contracts.
 - Building T – Room 1200 Replace carpet and paint (\$30,000) - Soliciting proposals.
 - Building R – Thermostat for gym heater (\$60,000) – Soliciting proposals.

- Facility Advisory Committee Approved 4/19/17
 - Baseball field - Scoreboard replacement (\$130,000).
 - ◆ Board approved in October – waiting for Notice to Proceed from Contracts.
 - Bldg. MM - Trailer removal (\$20,000) *Complete*
 - Bldg. L – Replace basement Vinyl floor (\$13,000) *Complete*
 - CDC (LAC) – Replace carpet in classrooms and offices (\$16,000)
 - ◆ 98% complete

LAC Building D 1st and 2nd Floors – Science Labs (Measure E)



- MSP Architects – Design Firm, T.B. Penick & Sons – Contractor .
- Renovate 16,000 square feet of 1st floor and 2,573 square feet of 2nd floor for new Science Labs.
- Project started September 2016, original estimated construction completion Fall 2017.
- New estimated construction completion Fall 2018.
- LBCC issued termination letter on 5/22/17. Working through process with Western Surety Company to get the project completed.
- Total project budget = \$14,635,024

District Wide Security Monitoring System (Measures E & LB)



PCC Campus

Red = Facial recognition
Green = Camera coverage

- P2S Engineering – Design Firm, Pars Arvin – Contractor.
- Project started in October 2016, estimated construction completion Winter 2018.
- Design plan covers all exterior building entrances and heavy use areas.
- 98% of the 200 cameras have been installed at PCC.
- Currently working on programming Video Management System (VMS).

District Wide Security Monitoring System (continued) (Measures E & LB)

LAC Campus

Red = Facial recognition

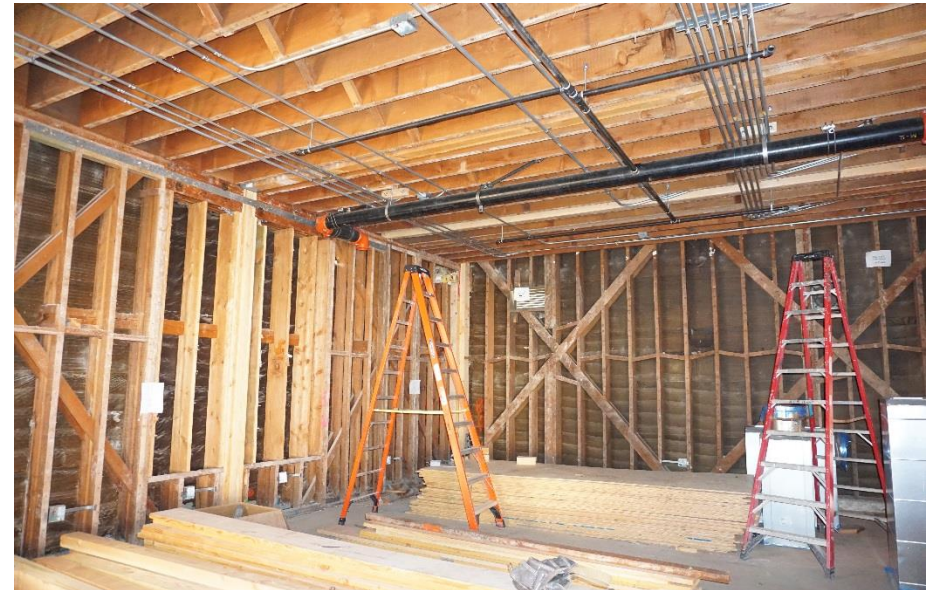
Green = Camera coverage



- Maintenance and support assessment addressed during the design process. New staff position created based on assessment.
- Long Beach Police can view cameras in an emergency through VMS.
- LAC camera installation has begun. Approximately 400 cameras to be installed at LAC.
- Total project budget = \$10,308,743

Current Construction Projects

LAC Building P – English Studies (Measures E and LB)



- Steinberg Architects – Design Firm, A&B Construction – Contractor.
- Occupants moved to swing space in Buildings M and N.
- Project will address ADA, classrooms, offices and MEP systems.
- Currently working on interior demolition, framing and MEP rough-in.
- Construction started February 2017, estimated completion Fall 2018.
- Total project budget = \$8,670,713

Upcoming Construction Projects

LAC Building J – Auditorium (Measures E & LB)



- SVA Architects – Design Firm.
- Renovate 37,878 GSF Auditorium, originally built in 1956.
- Adding 14,119 GSF onto northwest corner for additional classrooms, offices, storage and elevator.
- Upgrading structural, accessibility and fire/life safety to current codes.
- DSA approved October 3, 2017.
- Notice of bid went out on October 13, 2017 and job walk held October 23, 2017.
- Anticipated construction start January 2018 and construction completion Fall 2019.
- Total project budget = \$24,629,548

Completed Construction Projects

PCC Buildings QQ & RR – Electrical Program Relocation, Dyer Hall, Lifetime Learning Center Relocation (Measure E)

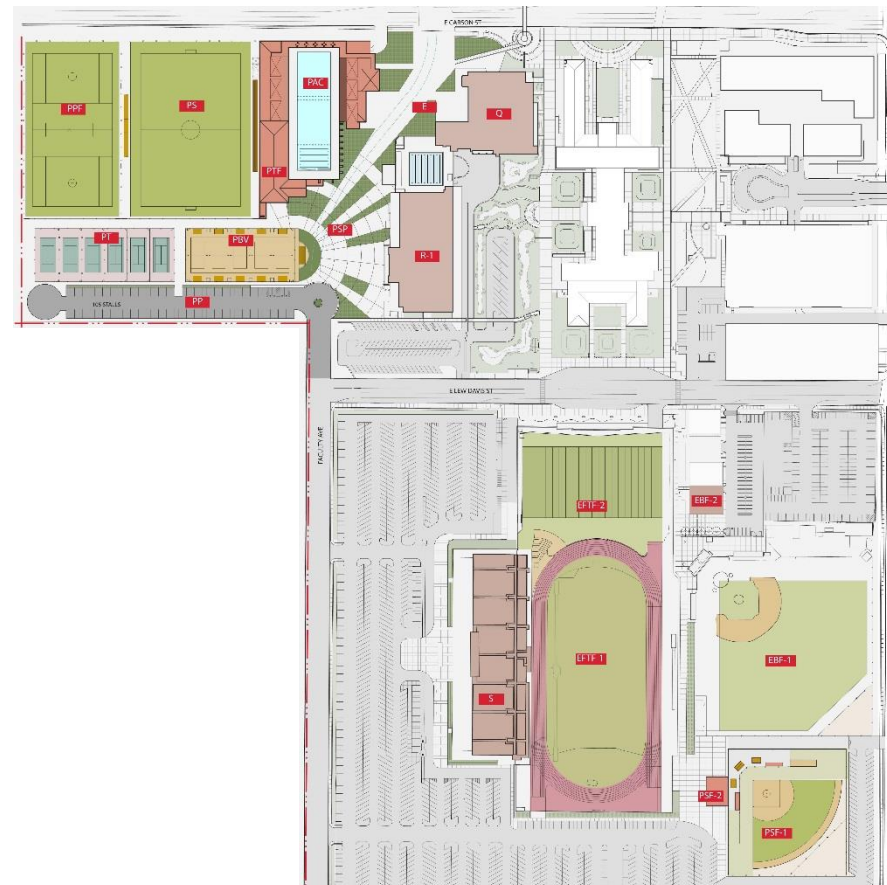


- HPI Architects – Design Firm, R.C. Construction – Contractor .
- Building QQ (24,454 GSF) includes 5 Electrical labs, 3 classrooms, 9 faculty offices, Lecture Hall and Lifetime Learning Center.
- Building RR (7,667 GSF) renovated for the Electrical program’s robotics labs with 2 electrical labs, 1 electrical machinery room and 1 workroom.
- Completed Summer 2017.
- Total project budget = \$20,302,962

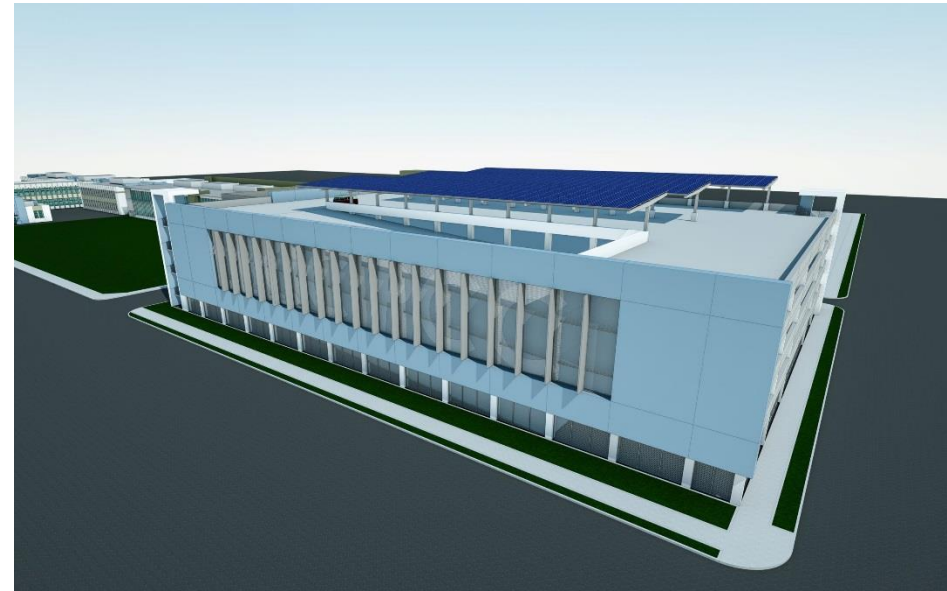
Current Design Projects

LAC Kinesiology Labs and Aquatic Center (Measures E & LB)

- Design contract awarded to Westberg and White, Spring 2017.
- Design for renovation of Outdoor Kinesiology Labs, which includes a softball field, soccer fields, sand volleyball courts, tennis courts and associated support facilities and infrastructure.
- Design also includes construction of a new Aquatic Center, which includes 50 meter pool and support building of approximately 15,000 sq. ft. to provide showers, locker rooms, storage, pool equipment and office spaces.
- Address ADA access issues, lighting and parking.
- Anticipated construction start Spring 2019.
- Total project budget = \$44,238,099

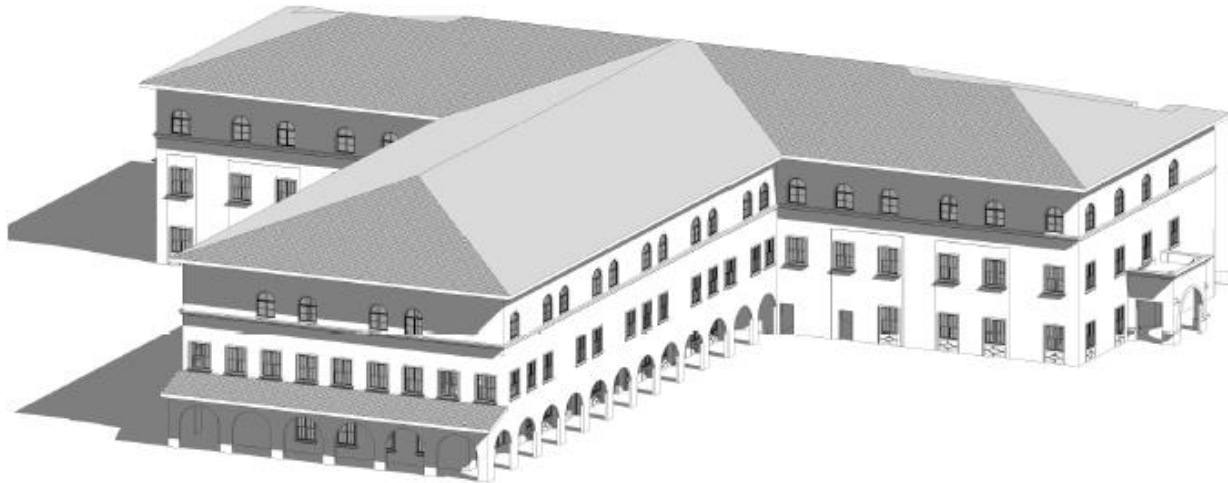


PCC Parking Structure – P2 (Measure LB)



- HPI Architecture selected to prepare bridging design documents.
- Design-Build delivery method.
- Parking structure to include solar panels on top floor.
- Parking structure to serve 500-600 vehicles for long term student and staff parking needs.
- To be located in parking lots 5, 6 and 8.
- Design-Build Entity to be selected Fall 2017.
- Total project budget = \$21,493,800

**LAC Building M – Multi-Disciplinary Classroom
(Measures E & LB & Prop. 51 State Funding)**



- First State funded project utilizing the Design-Build delivery method.
- GKK Works selected to prepare bridging design documents.
- Project requires demolition of the existing Buildings M and N.
- New construction of a 3 story building of 81,970 GSF to include classrooms and offices.
- This building will house Language Arts, Foreign Language, Computer and Office Studies (COS).
- Anticipated construction start Fall 2019, construction completion Fall 2022.
- Total project budget = \$70,164,781 (State funded = \$20,601,755)



Current Design Projects

PCC Building MM – Construction Phase I (Measures E & LB & Prop. 51 State Funding)



- State budget approved funding for Preliminary Plans only during fiscal year 17/18.
- HPI Architecture selected to prepare design documents.
- Project will consist of renovating West Wing of MM which houses the HVAC and Carpentry departments.
- Project will include demolishing the former Alternative Fuels section.
- Anticipated construction start Fall 2019, construction completion Fall 2020.
- Total project budget = \$19,679,951 (State funded = \$7,096,729)

**QUESTIONS
&
ANSWERS**