



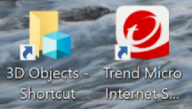
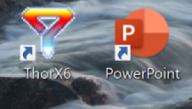
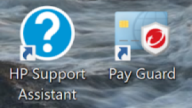
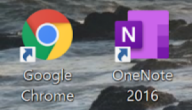
**LONG BEACH
CITY COLLEGE**

CANVAS FOR ESL

~ The ESL Learning Center Technology Series ~



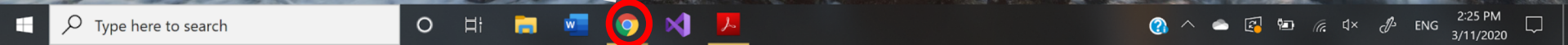
HOW TO LOG INTO CANVAS



Other internet options:



Double click to:
Access the internet



Search:
lbcc.edu



🔍 Search Google or type a URL 🗣️



LBCC



Web Store



Add shortcut

[Customize](#)



Click on:
CANVAS LMS



DECEMBER 2019

CAMPUS COMMUNITY





ACADEMICS

Distance Learning

Online Student Readiness

Canvas LMS

Explore our Programs

Academic Programs

Class Schedule

Calendars

Counseling

Learning & Academic Resources

Honors Program

Library

CANVAS LMS

LBCC'S LEARNING MANAGEMENT SYSTEM (LMS)

CANVAS - LOGIN



NOTE: Effective Monday, September 30, 2019, Canvas LMS and Office 365 will be accessed via Viking Portal.

WHAT IS THE LMS?

The LMS is a online platform that is used by many of our faculty for your courses. Some of your instructors may use the LMS just to post course material, while others may also use the LMS to administer tests, assignments, quizzes, hold discussion forums, take attendance, post grades, and more.

Types of courses using the LMS are:

- **Fully Online:** a course that meets 100% Fully Online
- **Hybrid:** a course that meets partially in a Classroom & Online
- **Web-Enhanced:** a face-to-face course that meets 100% in a Classroom yet also uses the LMS.

HOW DO I ACCESS AND LOG IN?

Below you will find the link to our LMS login site. You log in using your **Viking ID** and **Password**.

CANVAS LMS – LOGIN

Type in:
**Student ID
number**

VIKING PORTAL

VikingID / EmployeeID

Password

**LONG BEACH
CITY COLLEGE**

Login Change Password New/Forgotten Password

- [Student Login Help](#)
- [Faculty/Staff Login Help](#)


VIKING PORTAL

VikingID / EmployeeID

Password

[Login](#) [Change Password](#) [New / Forgotten Password](#)

- [Student Login Help](#)
- [Faculty/Staff Login Help](#)



Type in:
Account
password

Dashboard

lbcc.instructure.com

Dashboard

NEW ACTIVITY ↑

YESTERDAY

Monday, February 3

- FILM 1 - INTRODUCTION TO FILM STUDIES - 10254** FILM 1 - INTRODUCTION TO FILM STUDIES - 10254 ANNOUNCEMENT
FILM 1: DF #5 AND QUIZ SCORES POSTED
- POLSC 1 - INTRODUCTION TO GOVERNMENT - 10116** POLSC 1 - INTRODUCTION TO GOVERNMENT - 10116 PAGE
Home Page TO DO: 11:59 PM

TODAY

Tuesday, February 4

- FILM 1 - INTRODUCTION TO FILM STUDIES - 10254** FILM 1 - INTRODUCTION TO FILM STUDIES - 10254 ANNOUNCEMENT
FILM 1: FINAL EXAM ONLINE 12:00 AM
- POLSC 1 - INTRODUCTION TO GOVERNMENT - 10116** POLSC 1 - INTRODUCTION TO GOVERNMENT - 10116 QUIZ
Q#14 10 PTS DUE: 12:00 PM

TOMORROW

Wednesday, February 5

- FILM 1 - INTRODUCTION TO FILM STUDIES - 10254** > Show 1 completed item

Today + [calendar] [bell] [menu]

When you log in, you will see all the assignments that are due by date and class.

Dashboard lbcc.instructure.com

B

Account

Dashboard

Courses

Resources

Courses

FILM 1 - Introduction to Film Studies - 10254
2020 Winter

MATH 70 - Second Calculus Course - 33748
2020 Spring

PHYS 3A - Physics Sci & Eng - Mechanics - 30144
2020 Spring

POLSC 1 - Introduction to Government - 10116
2020 Winter

All Courses

Today

FILM 1 - INTRODUCTION TO FILM STUDIES - 10254 ANNOUNCEMENT
FILM 1: DF #5 AND QUIZ SCORES POSTED 12:00 PM

POLSC 1 - INTRODUCTION TO GOVERNMENT - 10116 PAGE
Home Page TO DO: 11:59 PM

FILM 1 - INTRODUCTION TO FILM STUDIES - 10254 ANNOUNCEMENT
FILM 1: FINAL EXAM C LINE 12:00 AM

INTRODUCTION TO GOVERNMENT - 10116 QUIZ
Q #14 10 PTS
DUE: 12:00 PM

Show 1 completed item

To go to a specific class:
First click on Courses

Dashboard

lbcc.instructure.com

Today

Courses

FILM 1 - Introduction to Film Studies - 10254
2020 Winter

MATH 70 - Second Calculus Course - 33748
2020 Spring

PHYS 3A - Physics for Eng - Mechanics - 30144
2020 Spring

POLSC 1 - Introduction to Government - 10116
2020 Winter

All Courses

Welcome to your courses! To customize the list of courses, click on the "All Courses" link and star the courses to display.

FILM 1 - INTRODUCTION TO FILM STUDIES - 10254 ANNOUNCEMENT
FILM 1: FINAL EXAM ONLINE
12:00 PM

POLSC 1 - INTRODUCTION TO GOVERNMENT - 10116 PAGE
TO DO: 11:59 PM

FILM 1 - INTRODUCTION TO FILM STUDIES - 10254 ANNOUNCEMENT
FILM 1: FINAL EXAM ONLINE
12:00 AM

POLSC 1 - INTRODUCTION TO GOVERNMENT - 10116 QUIZ
Q#14
10 PTS
DUE: 12:00 PM

Show 1 completed item

**To go to a specific class:
Then click on the class name**

B

Account

Dashboard

Courses

Calendar

Inbox

Help

Resources

FILM 1- 10254 > Modules

- Home
- Announcements
- Modules
- Syllabus
- Assignments
- Quizzes
- Grades
- Files
- Pages
- People
- Chat
- Purchase Course Materials
- Collaborations

Recent Announcements

- FILM 1: FINALE EXAM**
Your FINALE EXAM (80 questions/80 points) on Chapters 11, 7, 1, 2, 3, 10, 4, 5, 6, 8, and 9 i...
Posted on: Feb 4, 2020 at 12am
- FILM 1: DF #5 AND QUIZZES**
Your DF #5 is graded, and all your quiz scores are posted to the Canvas gradebook. All th...
Posted on: Feb 3, 2020 at 12pm
- FILM 1: REMINDER: DUE TODAY, FEB. 2**
A reminder that these assignments are due by end of today, Feb. 2. Do not related to Chap...
Posted on: Feb 2, 2020 at 6am

If you want to access the class material:
Click on the links on the left side to access files, check your grades, see new announcements, quizzes, etc.

FILM 1: INTRODUCTION TO FILM STUDIES

WELCOME TO FILM 1!

SYLLABUS AND COURSE MATERIALS

FILM_1_COURSE SYLLABUS_WI20 (DOCX)

- View Course Stream
- View Course Calendar

- To Do**
- FILM 1: SCORES POSTED ...**
Feb 1 at 12pm |
 - FILM 1: REMINDER: DUE ...**
Feb 2 at 6am |
 - InQuizitive for Chapter 4: ...**
10 points |
Feb 2 at 11:59pm |
 - InQuizitive for Chapter 5: ...**
10 points |
Feb 2 at 11:59pm |
 - InQuizitive for Chapter 6: ...**
10 points |
Feb 2 at 11:59pm |
 - InQuizitive for Chapter 8: ...**
10 points |
Feb 2 at 11:59pm |
 - InQuizitive for Chapter 9: ...**
10 points |
Feb 2 at 11:59pm |

- Recent Feedback**
- FA #5: CH 08: EDITING (40)**
28 out of 40



HOW TO SEND AN EMAIL

Dashboard

NEW ACTIVITY ↑

TODAY
Wednesday, March 11

CS 61 - DISCRETE STRUCTURES - 33989	CS 61 - DISCRETE STRUCTURES - 33989 QUIZ Homework 1.5 Methods of Proof	16 PTS DUE: 11:59 PM
Show completed item		

MATH 70 - SECOND CALCULUS	MATH 70 - SECOND CALCULUS COURSE - 33748 ANNOUNCEMENT Monday/Thursday SI Sessions	8:40 AM
---------------------------	--	---------

TOMORROW
Thursday, March 12

Nothing Planned Yet

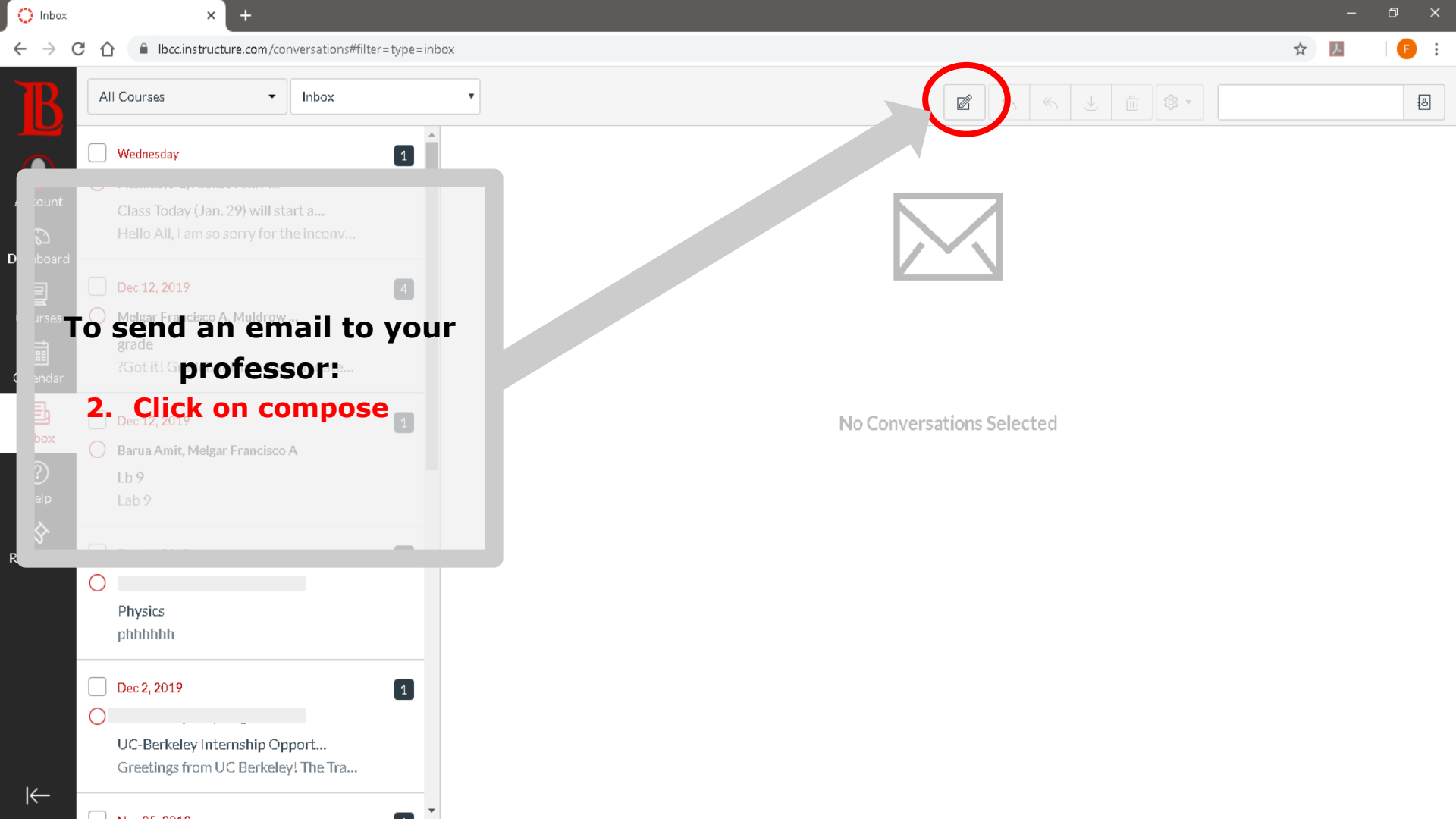
FRIDAY
March 13, 2020

CS 61 - DISCRETE STRUCTURES - 33989	CS 61 - DISCRETE STRUCTURES - 33989 DISCUSSION Thinking Logically, Questions and Answers	REPLIES	10 PTS DUE: 11:59 PM
-------------------------------------	---	---------	-------------------------

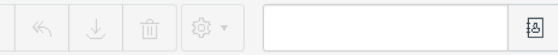
March 14 to March 29

To send an email to your professor:
1. Click on inbox





All Courses Inbox



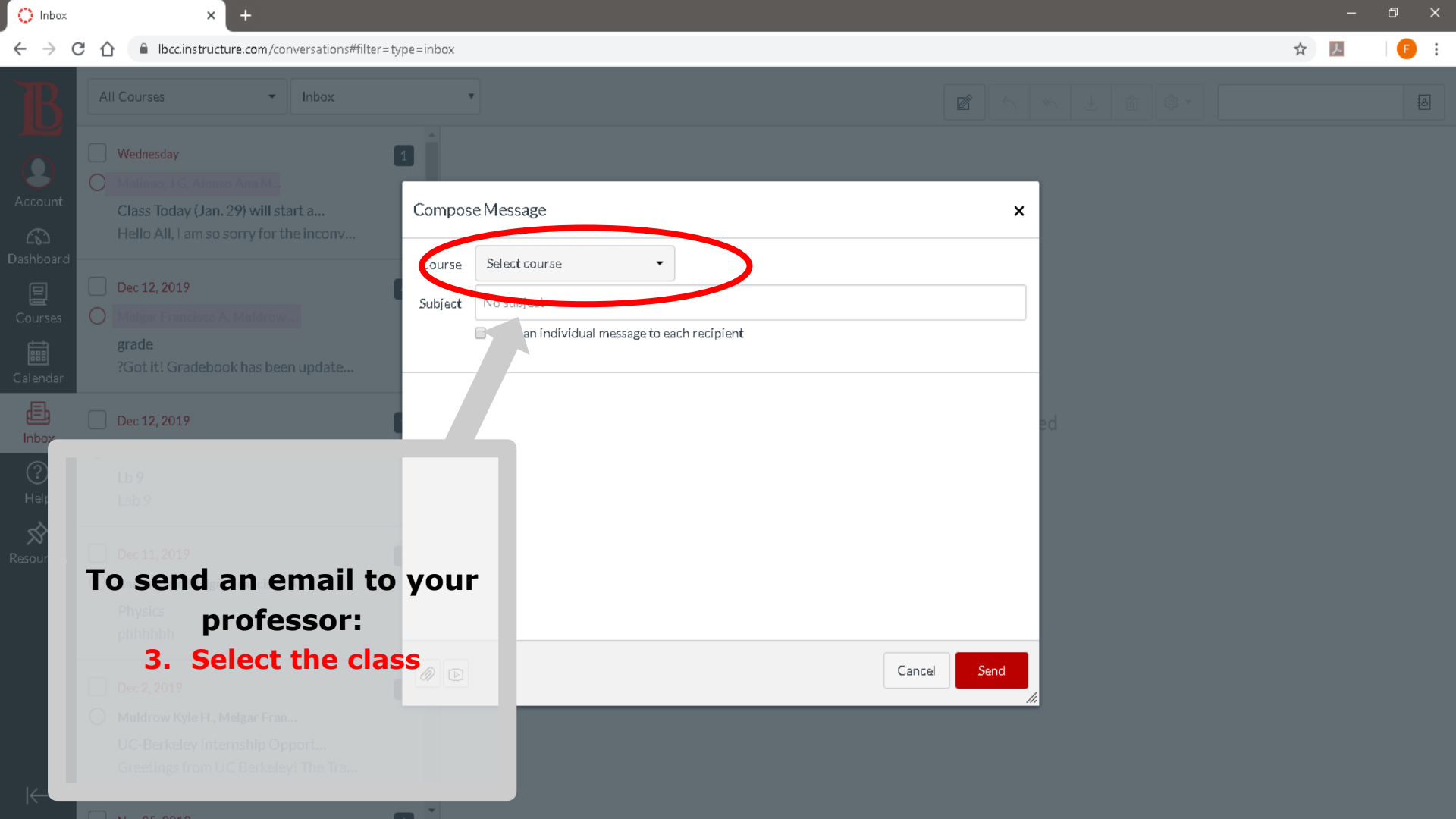
To send an email to your professor:

2. Click on compose

- Wednesday 1
Class Today (Jan. 29) will start a...
Hello All, I am so sorry for the inconveni...
- Dec 12, 2019 4
Melgar Francisco A. Muldrow...
grade
?Got it! G...
- Dec 12, 2019 1
Barua Amit, Melgar Francisco A
Lb 9
Lab 9
- Physics
phhhhhh
- Dec 2, 2019 1
UC-Berkeley Internship Opport...
Greetings from UC Berkeley! The Tra...
- Nov 25, 2019



No Conversations Selected



Compose Message

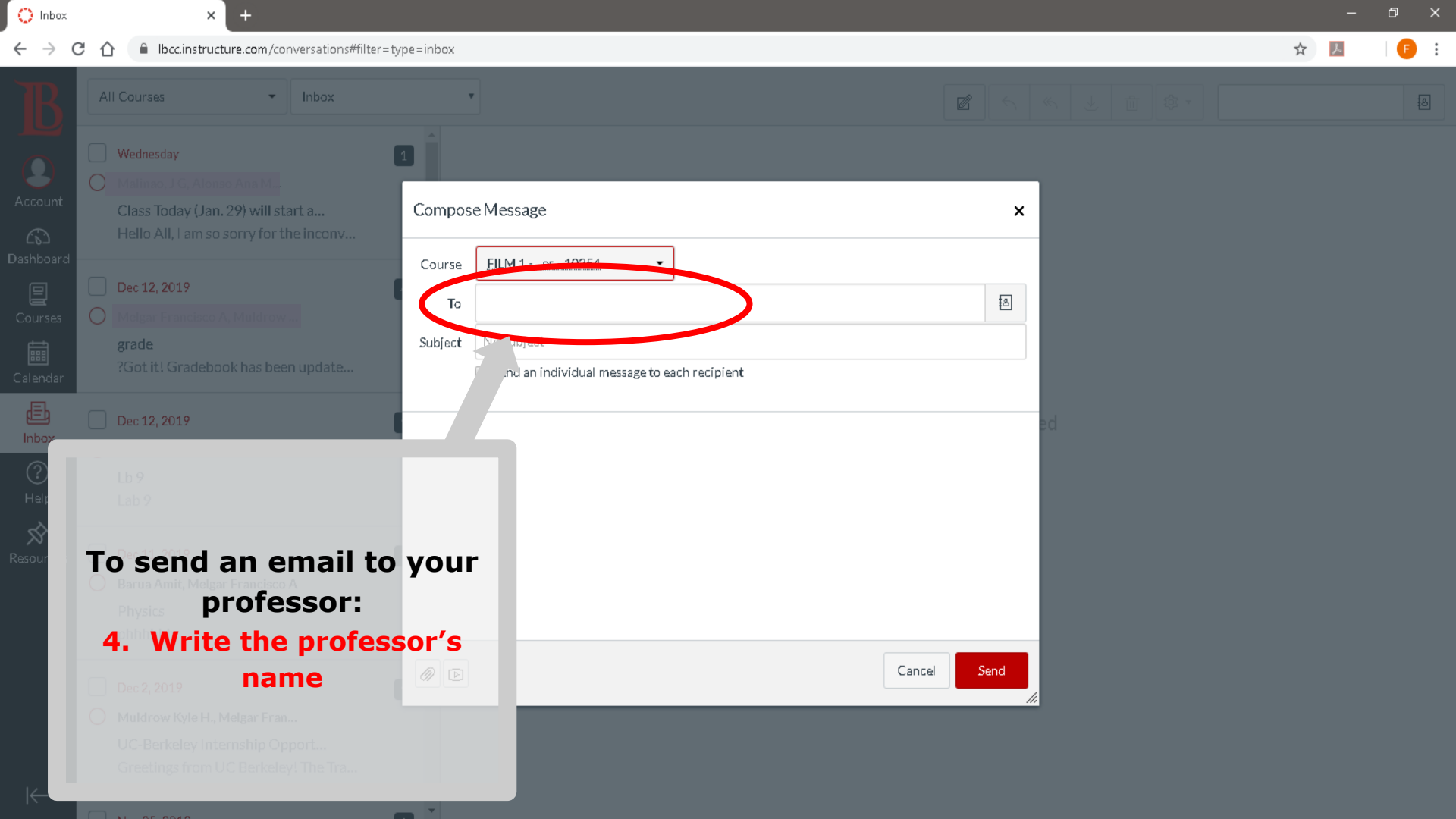
Course Select course

Subject No subject

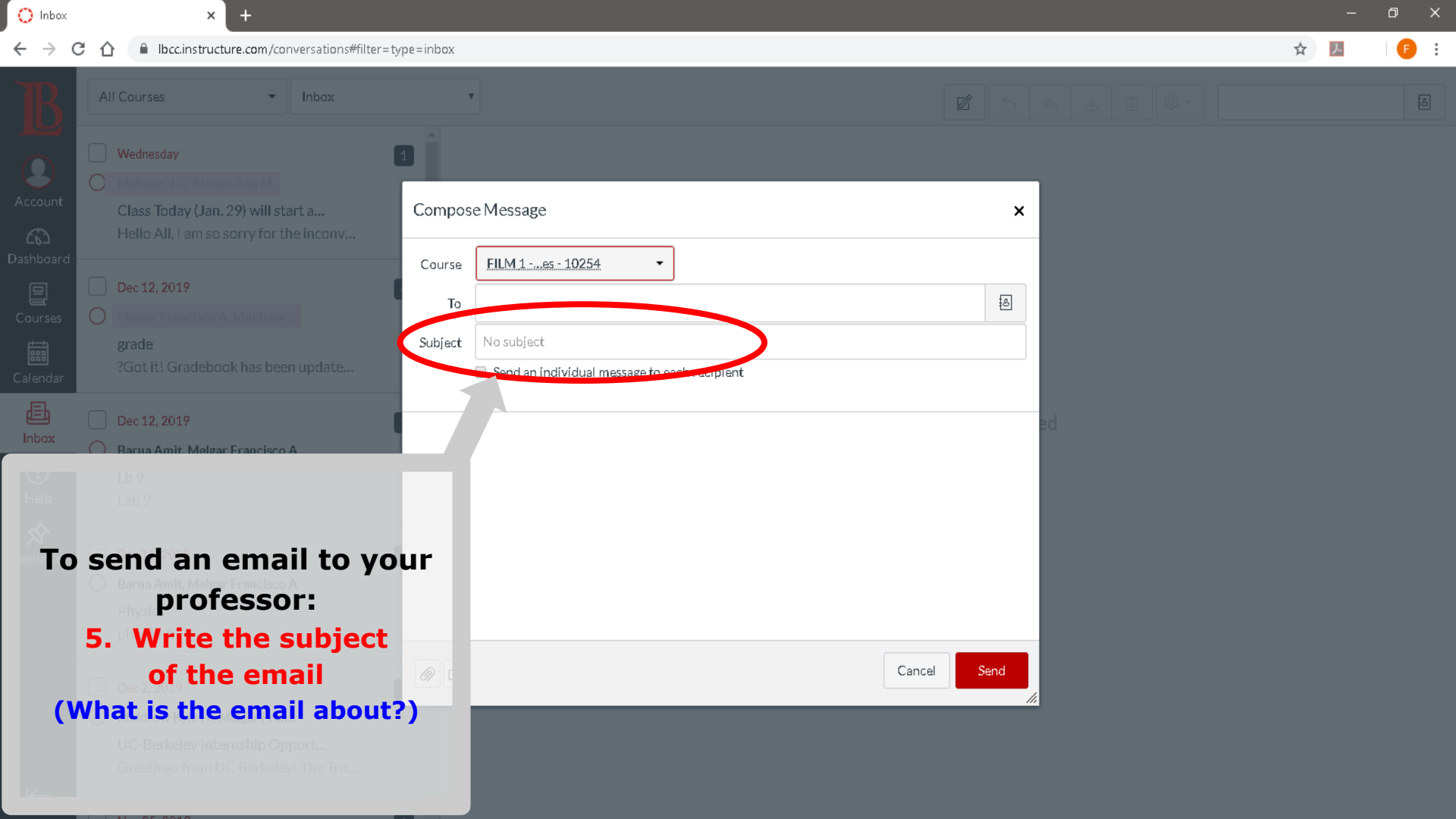
Send an individual message to each recipient

Cancel Send

To send an email to your professor:
3. Select the class



To send an email to your professor:
4. Write the professor's name



Compose Message

Course

To

Subject

Send an individual message to each recipient

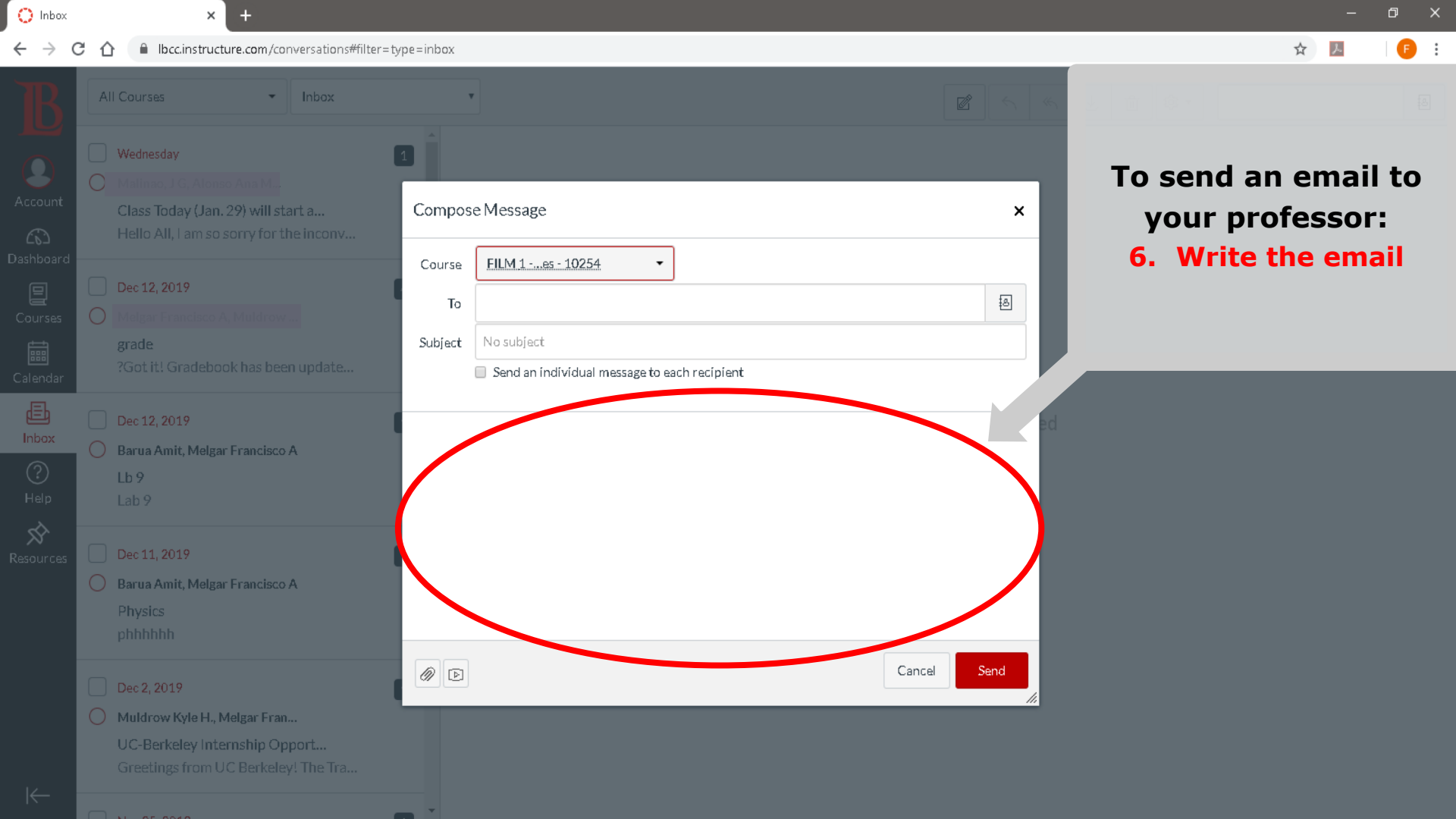
Cancel

Send

To send an email to your professor:

5. Write the subject of the email

(What is the email about?)



To send an email to your professor:
6. Write the email

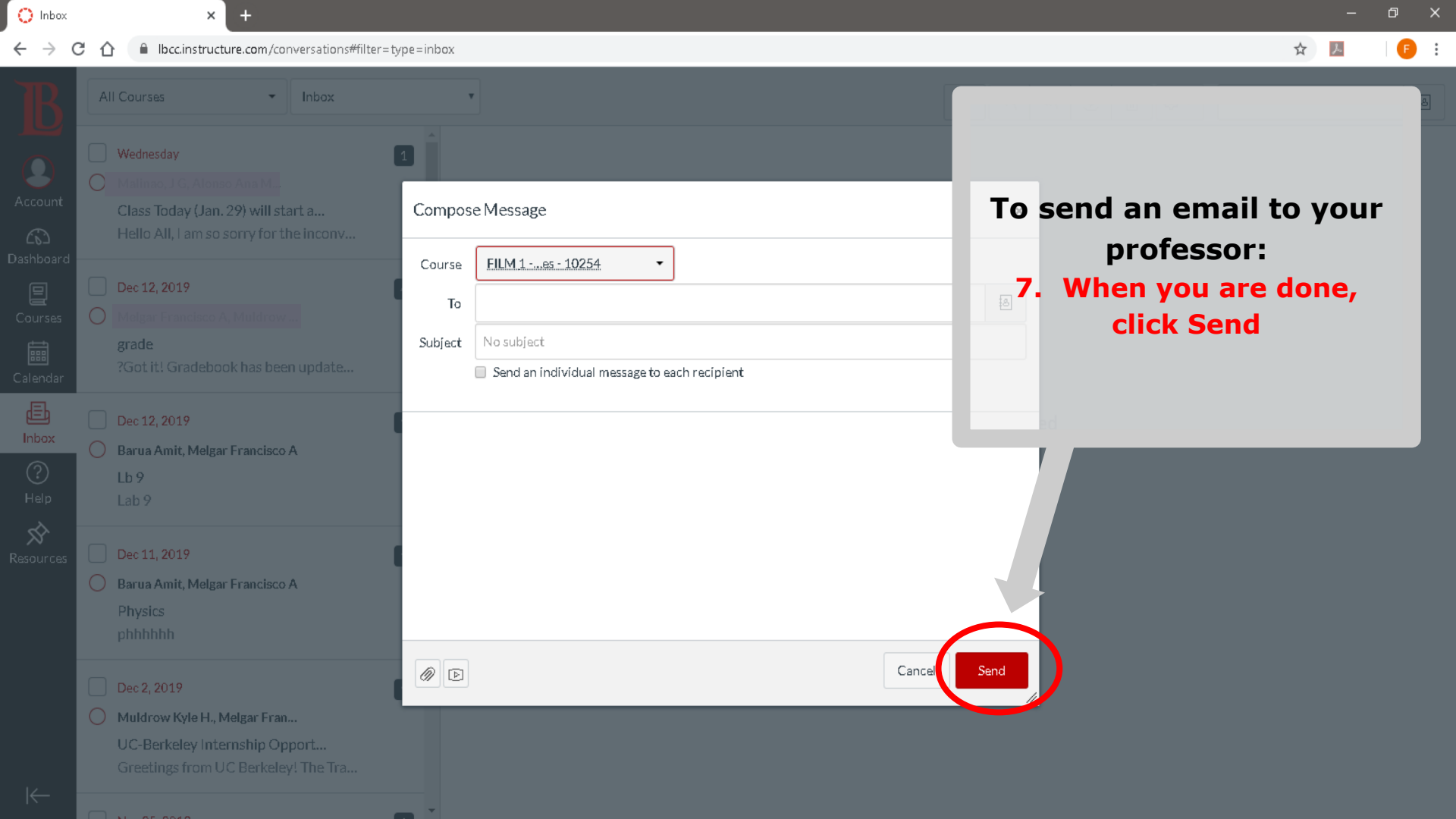
Compose Message ×

Course

To

Subject

Send an individual message to each recipient



To send an email to your professor:
7. When you are done, click Send

Compose Message

Course

To

Subject

Send an individual message to each recipient

B  canvas
